

Whitsome STEADING 1



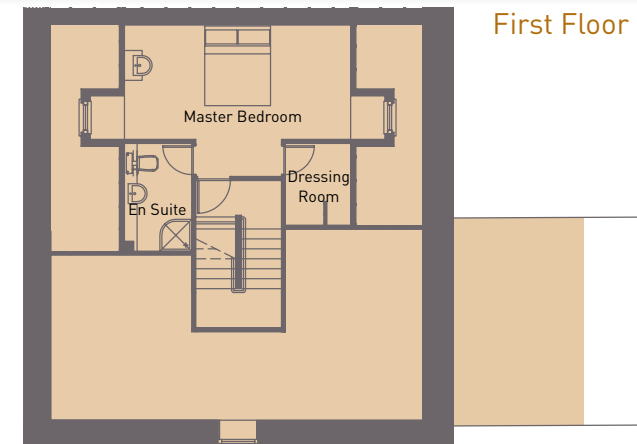
This three bedroom steading house offers generous open-plan living, with kitchen, dining room and living room all connected in a free-flowing space. A sun room off the living area opens onto the garden.

146 sqm



Ground Floor

Ground Floor	Metric	Imperial
Living Room	4.80 x 3.52	15'9" x 11'6"
Dining Room	2.35 x 2.22	7'8" x 7'3"
Kitchen	4.16 x 3.54	13'8" x 11'7"
Sun Room	4.92 x 3.16	16'2" x 10'4"
Bedroom 2	3.68 x 3.54	12'1" x 11'7"
Bedroom 3	3.68 x 3.51	12'1" x 11'6"
Bathroom	2.15 x 2.00	7'0" x 6'6"
Utility Room	2.30 x 1.25	7'6" x 4'1"
Vestibule	2.34 x 1.90	7'8" x 6'3"



First Floor

First Floor	Metric	Imperial
Master Bedroom	5.68 x 3.68	18'7" x 12'1"
En Suite	2.85 x 1.64	9'4" x 5'4"
Dressing Room	2.06 x 1.64	6'9" x 5'4"