

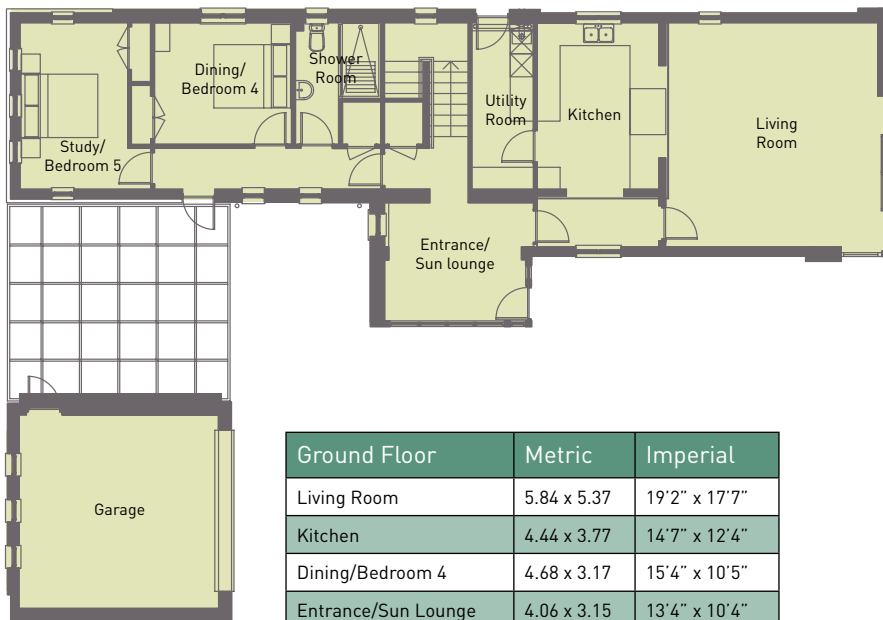
Whiteadder HOUSE 14



Whiteadder House benefits from a particularly lovely garden on three sides that soaks up the sun all day. Inside, the feeling of light and space continues with four bedrooms (five if you count the study) and a lovely living/dining room. Upstairs, each of the three generous bedrooms has a different aspect, with the master bedroom enjoying both an en suite shower room and dressing room.

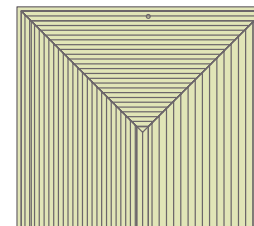
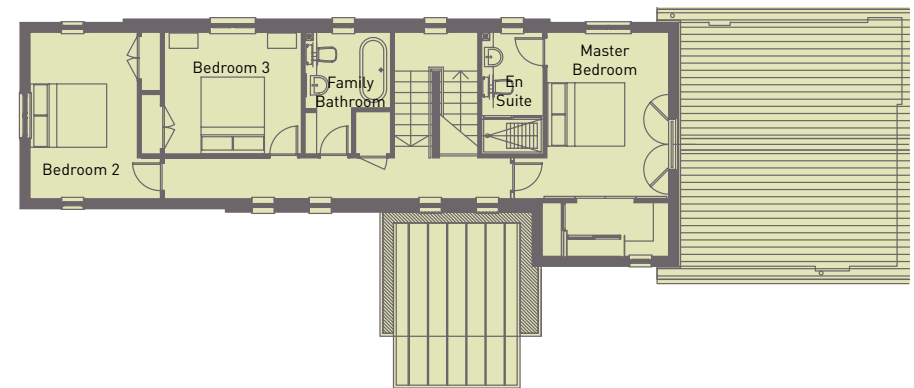
203 sqm

Ground Floor



Ground Floor	Metric	Imperial
Living Room	5.84 x 5.37	19'2" x 17'7"
Kitchen	4.44 x 3.77	14'7" x 12'4"
Dining/Bedroom 4	4.68 x 3.17	15'4" x 10'5"
Entrance/Sun Lounge	4.06 x 3.15	13'4" x 10'4"
Study/Bedroom 5	4.34 x 3.67	14'2" x 12'0"
Shower Room	3.26 x 2.52	10'8" x 8'3"
Utility Room	3.37 x 1.60	11'0" x 5'3"

First Floor



First Floor	Metric	Imperial
Master Bedroom	4.34 x 3.77	14'3" x 12'4"
En Suite	3.00 x 1.60	9'10" x 5'3"
Bedroom 2	4.34 x 3.07	14'3" x 10'1"
Bedroom 3	4.08 x 3.17	13'5" x 10'5"
Family Bathroom	3.17 x 2.52	10'5" x 8'3"