

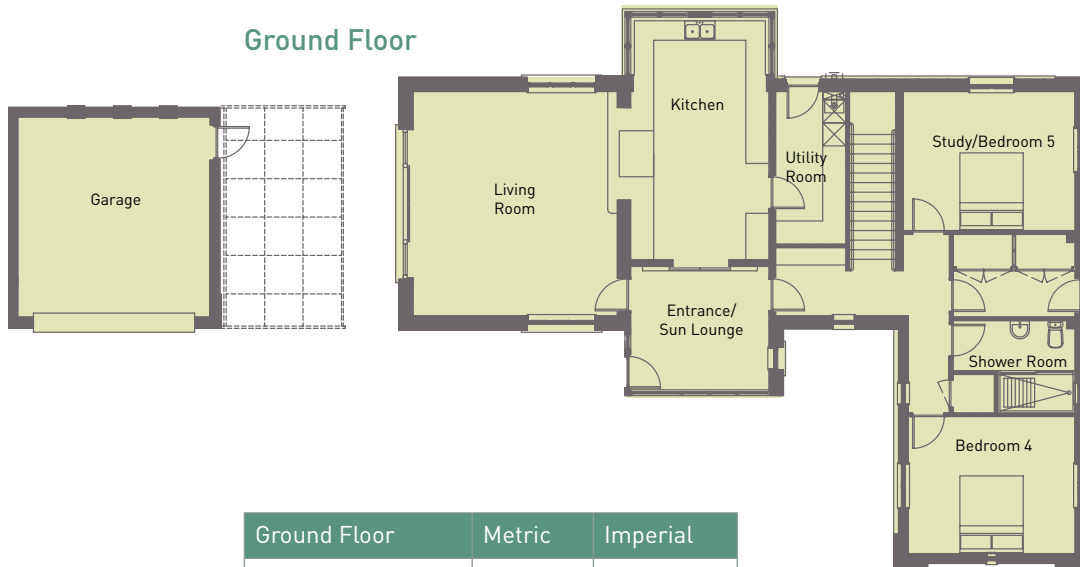
# Till HOUSE 12



Till House benefits from a beautiful square living room with generous glazing on three sides, giving an open outlook over the garden. There are four double bedrooms, with a further room offering the prospect of a fifth bedroom or study. A detached double garage is also part of this home's many attractions.

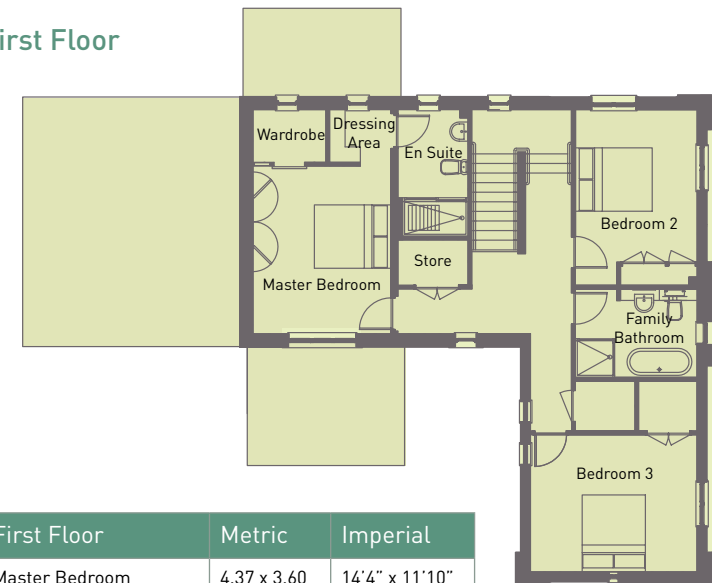
239 sqm

## Ground Floor



Ground Floor	Metric	Imperial
Living Room	5.84 x 5.49	19'2" x 18'0"
Kitchen	6.32 x 3.60	20'9" x 11'10"
Study/Bedroom 5	4.47 x 3.62	14'8" x 11'10"
Entrance/Sun Lounge	3.60 x 3.22	11'9" x 10'7"
Bedroom 4	4.47 x 3.57	14'8" x 11'8"
Shower Room	3.08 x 2.40	10'1" x 7'10"
Utility Room	3.97 x 1.82	13'0" x 5'11"

## First Floor



First Floor	Metric	Imperial
Master Bedroom	4.37 x 3.60	14'4" x 11'10"
En Suite	3.30 x 1.82	10'10" x 5'11"
Bedroom 2	4.34 x 3.57	14'3" x 11'8"
Bedroom 3	4.57 x 3.17	15'0" x 10'5"
Family Bathroom	3.17 x 2.30	10'5" x 7'6"