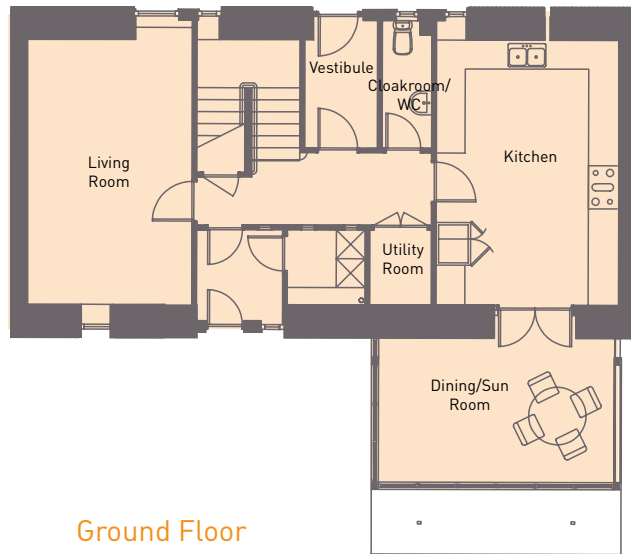


Leitholm STEADING 4



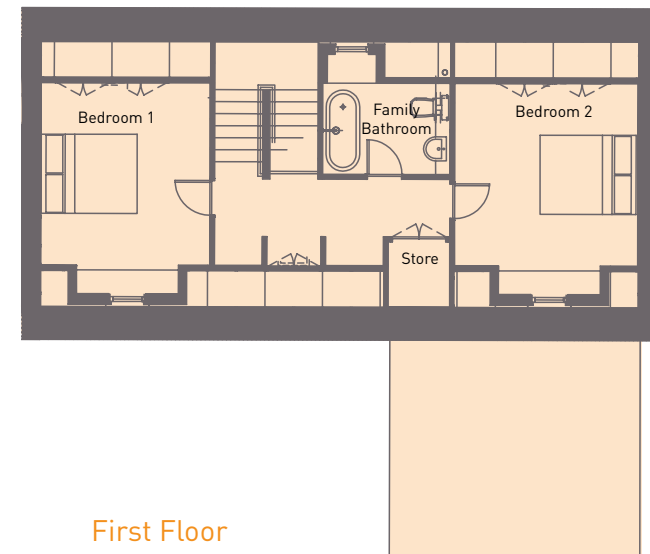
This two bedroom steading house features a large kitchen with generous work surfaces. The sun room overlooking the garden - makes the perfect dining room and will come into its own with the evening sun.

135 sqm



Ground Floor

Ground Floor	Metric	Imperial
Living Room	5.52 x 3.50	18'1" x 11'6"
Kitchen	5.52 x 3.82	18'1" x 12'6"
Dining/Sun Room	4.88 x 3.00	16'0" x 9'10"
Cloakroom/WC	2.78 x 1.11	9'1" x 3'8"
Utility Room	1.68 x 1.68	5'6" x 5'6"
Vestibule	2.78 x 1.68	9'1" x 5'6"



First Floor

First Floor	Metric	Imperial
Bedroom 1	3.82 x 3.79	12'6" x 12'5"
Bedroom 2	3.80 x 3.52	12'5" x 11'7"
Family Bathroom	2.67 x 1.91	8'9" x 6'3"