

Ladykirk STEADING 8

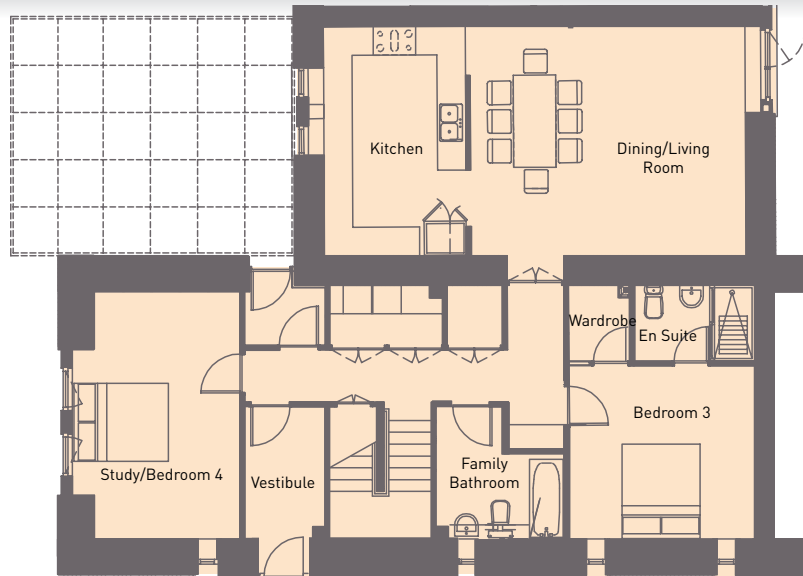


WHITSOME HILL
MAINS

This generous corner steading home has four lovely bedrooms, one of which would make the perfect study. The kitchen, dining room and living area are open-plan to reflect the relaxed nature of modern living.

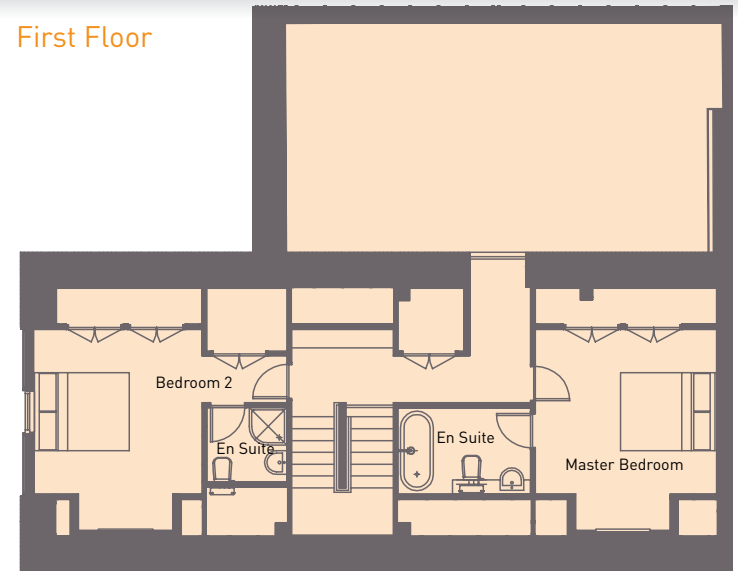
176 sqm

Ground Floor



Ground Floor	Metric	Imperial
Dining/Living Room	5.82x4.89	19'1" x 16'0"
Kitchen	4.84x3.01	15'10" x 9'10"
Vestibule	1.70x1.22	5'7" x 4'0"
Study/Bedroom 4	5.23x3.08	17'2" x 10'1"
Bedroom 3	3.54x3.94	11'7" x 12'11"
En Suite	2.61x1.70	8'7" x 5'7"
Wardrobe	1.20x1.70	3'11" x 5'7"
Family Bathroom	2.79x1.70	9'2" x 5'7"

First Floor



First Floor	Metric	Imperial
Master Bedroom	3.58x3.49	11'9" x 11'5"
En Suite	1.70x1.70	9'2" x 6'0"
Bedroom 2	3.84x3.49	12'7" x 11'5"
En Suite	2.80x 1.85	5'7" x 5'7"